



Exchange Central

Professional Team Calendaring for Outlook® Users

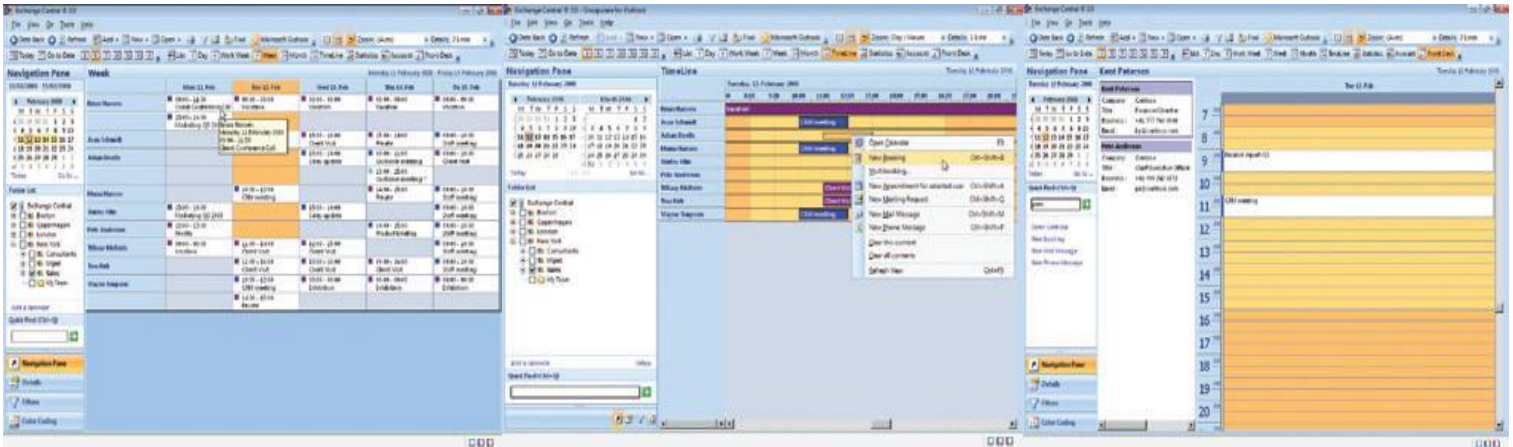
Exchange Central is an easy and effective group scheduling tool for Outlook® users who are organizing employees, meeting rooms, company vehicles or any other type of resources in Outlook®.

Exchange Central is a professional planning tool for the Outlook® user who needs to manage and control many calendars.

Anyone who works within a team, creates plans or books resources, will enjoy the benefits of Exchange Central from day one:

- Team oriented views providing the user with an optimal overview of many calendars
- Control and manage many calendars in one view
- Easy booking of employees and resources
- Drag and drop functionality - move or copy appointments between calendars

INTUITIVE INTERFACES



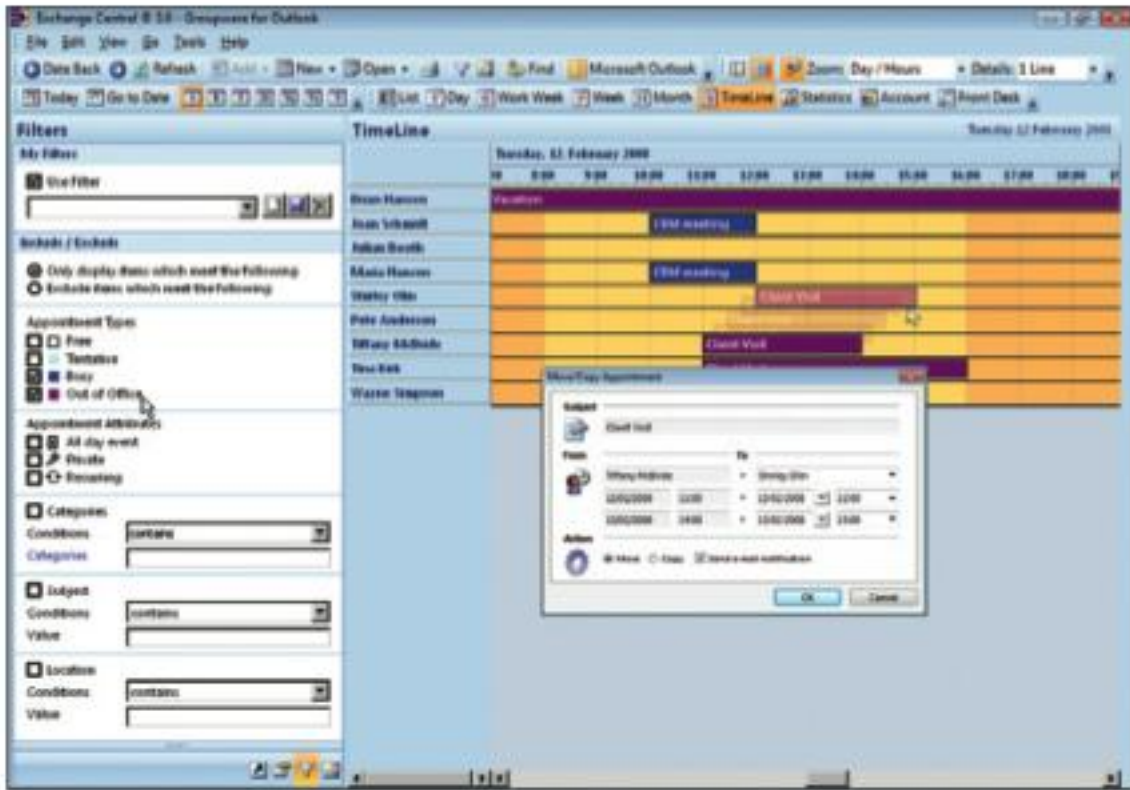
Become more efficient with Exchange Central:

Exchange Central provides you with a shortcut to the big picture. Exchange Central allows you to utilize your Microsoft Outlook® platform more efficiently. Now you will be able to accomplish essential team planning and booking. Exchange Central allows you to organize employees, colleagues, meeting rooms – any type of Exchange resource in the most efficient way!

Exchange Central will provide you with essential functionality for your daily booking and planning challenges such as:

- Intuitive and Team oriented views based on many Outlook® Calendars
- Overviews from one day to more than one year
- Enhanced planning and booking features using direct booking and drag and drop functionality
- Create customized groups or rely on pre-defined distribution lists (create groups based on location, skills or departments etc.)
- Easy on-demand filtering and color coding
- Create time usage statistics and export these to Microsoft Excel®
- Be able to locate your colleagues instantly
- Support for Outlook® permissions and private appointments
- RealTime Team Calendar functionality for Outlook® users

EXCHANGE CENTRAL



On-demand filtering and "drag and drop" of appointments are efficient planning features when booking employees and resources.

Technical Information

Exchange Central and RealTime Service® supports Microsoft Outlook® 2007 and Microsoft Exchange 2007.

RealTime Service®

Our RealTime Service upgrades the built-in update functionality within Exchange Central to an automatic event driven update service. With minimum impact and maximum output, it removes all fears of outdated information. RealTime Service® supports MS SQL including SQL Express Edition.

© 2010 Add-On Products

About Fleximation Systems Inc.

For more than 25 years Fleximation Systems Inc. has helped organizations of all sizes to find, evaluate, and procure solutions to manage and monitor their email, web, and networks more effectively. We specialize in email and network monitoring, email archiving, e-discovery, email recovery, and resource and conference room scheduling software. Our experience enables us to quickly recommend the right solution for your requirements—and to procure it at a price that meets your budget. View a complete list of the solutions we provide at www.flexnet.com, or call us @ 905-405-6211, or send us an e-mail at sales@flexnet.com or 1-800-263-8733 to schedule a free consultation.